



SEND Information Report 2025-2026

Who are the best people to talk to in this school about my child's difficulties with learning or Special Educational Needs and Disabilities (SEND)?
How does the school know if children need extra help?
What should I do if I think my child may have SEND?
How will the school staff support my child?
How will I know how my child is doing?
How will the learning and development provision be matched to my child's needs?
What support will there be for my child's overall wellbeing?
What training have the staff had, who support children with SEND?
What specialist services and expertise are available at or accessed by our school?
How will you help me to support my child's learning?
How will I be involved in discussions about and planning for my child's education?
How will my child be included in activities outside the classroom including school trips?
How accessible is the school environment?
Who can I contact for further information?
How will the school prepare and support my child to join the school, transfer to a new school or the next stage of education and life?
How are the school's resources allocated and matched to children's special educational needs?
How is the decision made about how much support my child will receive?
How can I find information about the Local Authority's Local Offer of services and provision for children and young people with special educational needs and disability?
Where else can I find reliable advice concerning SEND?
Glossary of terms

The Head teacher: Mrs D Marlow, is responsible for:

- Ensuring our school follows statutory guidance for all pupils including children with SEND.
- Working with the Assistant Headteacher (Inclusion and Pastoral) and the governing body to determine the strategic development of SEND provision in the school.
- Keeping the governing body informed about the progress and outcomes of pupils with SEND.
- Promoting a culture of inclusion, high expectations, and equal opportunities for all pupils.

The Assistant Headteacher for Inclusion and Pastoral: Mrs Wild, is responsible for:

- Ensuring that the school's SEND policy is implemented effectively and that the needs of pupils with SEND are met.
- Overseeing arrangements to ensure that pupils with SEND are fully included in all aspects of school life.
- Ensuring that resources are allocated appropriately to support pupils with SEND.
- Leading the Inclusion Team.

The SENCo: Mrs F Jaggs, is responsible for:

- Coordinating support for children with special educational needs and /or with a disability (SEND) and developing the school's SEND Policy to make sure all children have access to high quality teaching and provision.
- Supporting teaching staff in the identification of special educational needs, providing guidance and practical advice to remove barriers to learning and deploying support staff appropriately.
- Reviewing your child's progress and planning ahead for your child
- Liaising with other agencies who may be coming into school to help support your child's learning, for example: Speech and Language Therapy, Educational Psychology, School Nurse, Outreach Workers, Advisory Teachers etc.
- Monitoring provision and the impact of interventions.
- Providing specialist support and training for teachers and support staff in the school so they can help pupils with SEND to achieve the best possible outcomes in school.
- Applying for or reviewing Education Health Care Plans for children with more severe or complex needs.
- Ensuring that parents are involved in supporting their child's learning.

The SEN Governor (Reverend Mark Escott) is responsible for:

- Making sure that the school has an up to date SEND policy.
- Making sure that the school has appropriate provision and has made necessary adaptations to meet the needs of all children in the school.
- Making sure that the appropriate and necessary support is made for any child who attends the school who has SEN and/or disabilities.

- Making visits to understand and monitor the support given to children with SEND in the school and being part of the process to ensure your child achieves his/her potential in school.

The Class Teacher is responsible for:

- Ensuring that all children have access to good teaching and that the curriculum is adapted to the individual needs of all learners (also known as differentiation.)
- Monitoring the progress of all children in their class and identifying, planning and delivering any additional help that may be needed (this could be things like targeted work, additional support, adapting resources) and discussing amendments with the SENCO as necessary.
- Keeping you informed about the support your child is getting.
- Planning for and reviewing provision with support from the Inclusion Team, phase leaders and the leadership team, contributing to the assessment process which informs Pupil Progress Meetings.
- Ensuring that all members of staff working within school are aware of children's individual needs and /or conditions within their class, and what specific adjustments need to be made to enable all pupils to be included and make progress.
- Ensuring that the school's SEN Policy is followed in their classroom and for all the pupils they teach with SEND.

The Learning Support Assistant is responsible for:

- A Learning Support Assistant (LSA) may be allocated to a pupil with exceptional special educational needs and/or disabilities or they might be trained to deliver group or individual interventions. Their role is guided by your child's class teacher and the Inclusion Team. Whilst they take a very valuable role in your child's education, we would prefer that questions regarding your child's learning and progress are directed initially to the class teacher and/or Inclusion Team.
- We welcome daily dialogue between parents and LSAs about how your child is getting on at school and we do actively encourage this continued feedback.

How does the school know if children need extra help?



Pupils will be identified in school through:

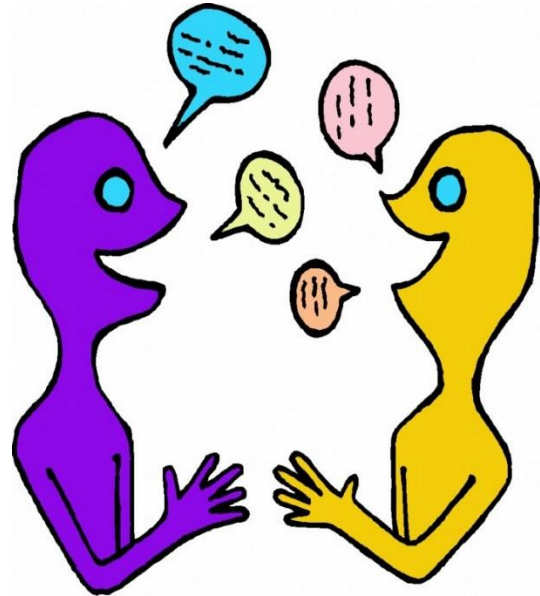
- ✓ Discussions between parents, class teachers and or the Inclusion Team.
- ✓ Discussions from pupil progress meetings.
- ✓ Further assessments may be necessary when progress and attainment are significantly below age related expectations.
- ✓ Families may be referred to or by other agencies such as the school nurse, speech and language therapist or the Educational Psychology service for more specialised support and advice.

St Catherine's C of E VC Primary school fully complies with expectations laid out within the SEND Code of Practice. If you would like to find out more about the code, please follow the link below:

[Special Educational Needs and Disability Code of Practice: 0 to 25years](#)

What should I do if I think my child may have SEN?

- ✓ Share your concerns with the class teacher.
- ✓ Make an appointment to speak with a member of the Inclusion Team.
- ✓ Be actively involved in sharing information about what is working well and what might need to change.
- ✓ Attend all parent teacher consultations.



Maintaining regular contact with school is very important at this stage. You will be asked to share your ideas on how best to support the needs of your child, and your child will be invited to share their ideas too.

You can do this by emailing the SENCo via the office at admin@stcaths.herts.sch.uk or by telephone on 01992 463214.

How will the school staff support my child?

- ✓ Through quality teaching.
- ✓ Contributing to SEN Pupil Support Plans.
- ✓ Focused small group teaching / interventions.
- ✓ Use of LSAs to support learning or adapted resources.
- ✓ Taking advice from senior teachers, the Inclusion Team, or specialist advisory support depending on the individual child's needs.
- ✓ Maintaining close relationships with parents and carers.
- ✓ Keeping the Head teacher and Governors informed.
- ✓ Teaching small group interventions or in some instances 1:1 support.

The amount of support offered will depend on the needs of each individual child. Sometimes it may also be necessary to involve a specialist from an outside agency. Parents and carers will be fully informed and involved at each stage of the process.

Person centred approaches enable parents, children and teacher to co-produce SEN Pupil Support Plans. These will include targets that the children are working towards and strategies to support reaching these targets. The Support Plans will be reviewed regularly.

How will I know how my child is doing?

- ✓ You will receive a written annual report on your child's attainment and progress at the end of the summer term.
- ✓ Regular attendance at parent consultation meetings, termly Pupil Support Plan meetings, additional meetings with the Inclusion Team can be arranged by appointment throughout the school year.
- ✓ Parents will be kept informed by letter when their child is receiving some additional provisions, such as emotional wellbeing support. The letter will include the name and purpose of the intervention, the name of the member of staff who is leading it, as well as the duration of the intervention.



Teachers also try to provide informal feedback at the end of the school day if something noteworthy has occurred and on occasions, work may be sent home for your child to share with you.

How will the learning and development provision be matched to my child's needs?

- ✓ The class teachers are responsible for monitoring and tracking the attainment and progress of pupils within their class.
- ✓ All teachers plan quality teaching to ensure all lessons are accessible to all children.
- ✓ Small group or 1:1 interventions are used where there is an identified need.
- ✓ The children are also invited to share their opinions.
- ✓ Termly pupil progress meeting information will be used to assess and current provision.
- ✓ The Inclusion Lead is a member of SLT and ensures that termly meetings take place to review interventions, assess the effectiveness of current provision and to make the necessary changes for the next term.
- ✓ The Inclusion Lead is responsible for creating a whole school provision map to demonstrate how the range of needs are being met across the school.
- ✓ SEN surgeries are in place for all school staff to make an appointment with the Inclusion team to discuss additional strategies or support, aside from pupil progress meetings.



Provision is organised in 3 waves:

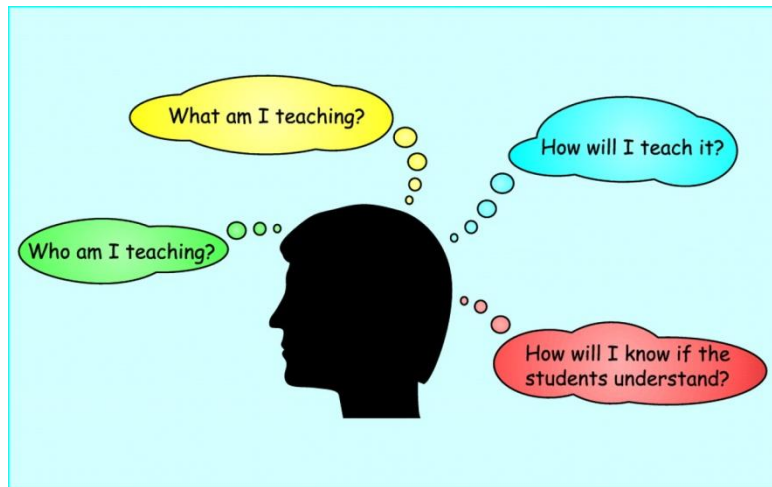
- Wave 1** – Quality first teaching – All pupils;
- Wave 2** – Small group interventions – Some pupils;
- Wave 3** – Individual interventions (usually with involvement of outside agencies) – Few pupils.

What support will there be for my child's overall wellbeing?

- ✓ Reinforcing school values and British values.
- ✓ Reinforcing the Christian ethos of our School.
- ✓ Teaching of PSHE - Personal, Social and Health Education.
- ✓ Participation in class circle time and whole school assemblies.
- ✓ Valuing pupil voice – through school council, pupil feedback questionnaires and listening boxes in classrooms.
- ✓ Modelling positive relationships between staff, pupils and parents and carers.
- ✓ Whole school policy and approach to behaviour and discipline.
- ✓ Promoting the school rules.
- ✓ Involvement in extracurricular activities.
- ✓ Links with the Ark Children's Centre.
- ✓ Access to a Family Support Worker by referral to HABs
- ✓ Play leaders support inclusive play in the playground.
- ✓ Peer partnerships.
- ✓ Counselling and play therapy sessions for pupils with an identified need.
- ✓ Nurture Group.
- ✓ Protective Behaviours training.
- ✓ Use of 'Starving the Anxiety / Anger / Stress Gremlin' for pupils aged 7-11 years old.
- ✓ Information regarding medical conditions will be handled sensitively, in line with our policy, and the appropriate staff will be informed of specific needs.
- ✓ The Inclusion Team includes a trained family support worker who will support families by signposting external services such as PALMs – Positive behaviour, Autism, Learning disability and Mental health and CAMHs – Childhood and Adolescent Mental Health services.



What training have the staff had, who support children with SEND?



- ✓ The Inclusion Lead attends courses on reforms to SEND and implementing the SEND Code of Practice and keeps the staff update with current thinking.
- ✓ Staff maintain regular attendance at cluster meetings.
- ✓ Staff INSET is provided to update staff on changes to the SEND Code of Practice and best practice.
- ✓ Staff INSET on provision mapping to plan provision for all pupils in each class.
- ✓ A skills audit for support staff has identified strengths within our support team and these needs can be used to match the needs of our pupils.
- ✓ Teachers and LSAs attend any relevant courses for continued professional development.
- ✓ The Inclusion Lead is a qualified teacher and has achieved the National SENCO Award.
- ✓ A dedicated LSA has an additional responsibility for EAL pupils.
- ✓ A dedicated LSA leads our Speech and Language Therapy provision.
- ✓ Training and advice is ongoing from the advisory service for children with Specific Learning Difficulties. (SpLD)
- ✓ Regular support from Speech and Language Therapy team, Educational Psychologist, Communication Autism Team, Visual Impairment team, Middleton School Outreach and the Behaviour Support Teams from the Phoenix Centre or Rivers ESC.
- ✓ All staff have current 'Safeguarding' training, 'Emergency First Aid' and 'Therapeutic Thinking' training (formerly known as Steps).



How will you help me to support my child's learning?



- ✓ Parent consultation meetings.
- ✓ Pupil Support Plan meetings.
- ✓ SEND surgeries.
- ✓ Access to a Family Support Worker via a referral to HABs.
- ✓ Home learning.
- ✓ Links from the school website to enhance learning.
- ✓ Parent workshops – in school and advertised workshops organised by local services, such as Middleton School, SPACE, The Ark Children's Centre etc.
- ✓ Your Child's Annual school report will also suggest ways to support your child in their learning.
- ✓ Curriculum meetings to inform and provide tips or guidance.
- ✓ Activities may be sent home for you to overlearn with your child at home.

How will I be involved in discussions about and planning for my child's education?

- ✓ You will be invited to attend parent consultation meeting throughout the school year. During the meeting personalised targets will be discussed as well as ideas on how to support your child further.
- ✓ We use Person Centred Approaches such as 'Good / bad day form' to consider how small changes can make a big difference.
- ✓ If your child is identified as having an additional need, the level of need and strategies to support your child will be fully discussed with you and your child.
- ✓ For some children with complex needs, where multiple agencies or services are involved, it may be necessary to refer to 'Families First' and put an 'Early Help Module' in place. Regular 'Team Around the Family (TAF) meetings will take place to ensure appropriate support is actioned.

Good Day	Bad Day
	
<p>What steps can we put in place to ensure more 'good' days?</p>	

For a few children an Education Health and Care Plan (EHC Plan) may be required, again the views of the child and the family are central to putting together a coordinated plan that involves advice from education, health and social care. An EHC Plan replaces the previous Statement of Special Educational Needs. Before an EHC Plan can be devised, there is a period of time where evidence of your child's severe, complex or lifelong need will be collected. A meeting will take place with all the people involved in your child's care, including yourself, and the final decision is made by the local education authority. Sometimes it may also be necessary to apply for extra funding to meet the needs of a few pupils, this is known as Local High Needs Funding (LHNF.)

How will my child be included in activities outside the classroom including school trips?



**OUTDOOR
LEARNING**
The Extended Classroom

- ✓ The individual needs of some children will be shared with supervisory staff at playtimes and lunchtimes to ensure their health and wellbeing.
- ✓ Play leaders are used during longer periods of play to engage with younger children and encourage social skills such as sharing and taking turns.
- ✓ Before a trip can take place, the appropriate risk assessments will be carried out to identify and problem solve any individual issues which might arise.
- ✓ Reasonable adjustments will be made, in all areas of school life, in order to meet the needs of all children.
- ✓ Where necessary parents will be involved in the decision making process.
- ✓ Please access our Learning Outside of the Classroom policy for more information.

How accessible is the school environment?

- ✓ St Catherine's is an accessible school, which complies with the [Equality Act 2010](#).
- ✓ Reasonable adjustments will be made where necessary, teachers record these on planning documents and on SEN Pupil Support Plans, as appropriate.
- ✓ The school Accessibility Plan is updated on a regular basis according to need. This document can be accessed via the school office upon request.



Who can I contact for further information?

- ✓ Class teacher
Via the school office on 01992 463214 number or by email:
admin@stcaths.herts.sch.uk

- ✓ SENCO: Mrs F Jaggs
Via the school office on the above telephone number or by email:
admin@stcaths.herts.sch.uk

- ✓ Head teacher: Mrs D Marlow
Via the school office on the above telephone number or by email:
admin@stcaths.herts.sch.uk

- ✓ SEND Governor
Via the school office on the above telephone number or by email:
admin@stcaths.herts.sch.uk

- ✓ SENDIASS (Special Educational Needs or Disabilities Information, Advice and Support Services).
<https://www.hertssendiass.org.uk/home.aspx>
Tel: 01992 555847

- ✓ Hertfordshire Local Offer – all the information regarding local services available.
<https://www.hertfordshire.gov.uk/microsites/Local-Offer/The-Hertfordshire-Local-Offer.aspx>

- ✓ KIDS – Offers information and support to parents and carers of disabled children and young people aged 0-19yrs in Hertfordshire.
[KIDS](#)
Tel: 01992 504013

We are a welcoming and open school. We always aim to resolve any problems that occur from time to time within school, however, should it be required; a copy of the complaints procedure is available from the school office. It is also good to hear when things are working well, so please be sure to share positive comments with us too.

How will the school prepare and support my child to join the school, transfer to a new school or the next stage of education and life?

Nursery to Reception:

- ✓ Settling visit, opportunity to meet the teacher and visit the school;
- ✓ Session with parent/ carer prior to start – additional visits as necessary;
- ✓ Information evening;
- ✓ Transition booklet with photographs of the setting.
- ✓ Meetings with appropriate outside agencies.

Reception to Year 6:

- ✓ Information meeting/ letter home;
- ✓ Meet the new teacher and classroom sessions;
- ✓ Open evenings;
- ✓ Handover meetings;
- ✓ Transition booklet with photographs of the setting.
- ✓ Meetings with appropriate outside agencies.

Secondary transfer or transfer to another setting:

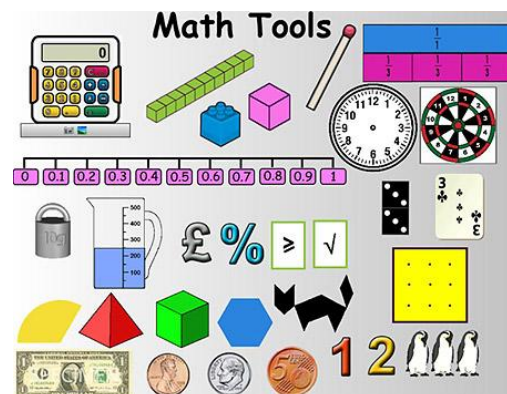
- ✓ Open evenings;
- ✓ Taster days;
- ✓ Specialised secondary transfer transition sessions – appropriate to the needs of the child, to support and promote emotional wellbeing;
- ✓ Maps/ photographs to increase familiarity.

How are the school's resources allocated and matched to children's special educational needs?

- ✓ All classrooms are equipped with interactive 'Clever Touch' technology.
- ✓ Each classroom is equipped with a variety of resources to support phonics, reading, writing and mathematical concepts.
- ✓ Other topic based equipment is centrally stored to allow access to all.
- ✓ Allocation of resources for each subject is based on budget allocations, which is decided by the Head teacher and the Governing Board.
- ✓ Funds and resources are allocated according to the level of need.

Grapheme chart Phase 2 and 3

s	t	p	n	m	d	g	c	r	h	b	f	l	j	v
ss	tt	pp	nn	mm	dd	gg	ck	rr	h	bb	ff	ll	j	vv
w	x	y	z	qu	ch	sh	th	ng	nk	a	e	i	o	u
ai	ee	igh	oa	oo	ar	or	ur	er	ow	oi	ear	air		



In exceptional circumstances additional funds can be applied for individual pupils, this is called Local High Needs Funding (LHNF).

How is the decision made about how much support my child will receive?

- ✓ Pupil progress meetings will track the progress of all pupils and will identify groups or individuals that would benefit from intervention.
- ✓ Pupil Support Plan meetings will provide an opportunity for individual targets to be reviewed and updated for SEN pupils.
- ✓ Progress is measured against Age Related Expectations (ARE) as defined by HfL (Herts for Learning – Hertfordshire’s education advisory service.) Pupils are assessed to be working above ARE, broadly within ARE or below ARE. Sometimes pupils may be lower attaining, but not have a special educational need. More information about how SEN is defined can be found in our SEND policy on our school website.
- ✓ Early identification and intervention is our aim at St Catherine’s. Supporting our children in the early years of their education to get the best start in their individual learning journey.
- ✓ Parents and carers will be involved if it is felt an intervention is needed or if outside agencies become involved in planning or delivering provision.

All additional support children receive will be recorded on a whole school provision map and impact of this support on the children’s progress or development will be measured at regular intervals.

How can I find information about the Local Authority's Local Offer of services and provision for children and young people with special educational needs and disability?

✓ Information regarding the Hertfordshire Local Authority SEND Offer can be found at:

[Schools and education | Hertfordshire County Council](#)

Hertfordshire's Local Offer is the door to finding information and support available for parents or carers of children and young people aged 0-25 with special educational needs or disabilities (SEND).

[What other service, help and advice is there available to families of children with special educational needs and or disability?](#)

This link will lead you directly to SEND pages within the Hertfordshire directory, which includes information on: activities and leisure, advice and support; childcare and education and training. If you need to speak to someone directly or require help to find the information you want, contact:

[SENDIASS \(Special Educational Needs or Disabilities Information, Advice and Support Services\)](#) or

[KIDS](#)

We are keen to know your thoughts about the Local Offer so we can continue to improve it. Please email localoffer@hertfordshire.gov.uk with your comments.

Further information

Helping families without internet access

If you know someone who would like to use the Local Offer but they cannot access the internet, ask them to contact their child's school, their local library, or children's centre. Find [your local library here](#) or [your local children's centre within the borough of Broxbourne here](#).

[If you reside in Essex you will need to access support through the local offer here.](#)

Applications for Education, health and Care needs assessments will also need to be made to the Essex SEND team.

Where else can I find reliable advice concerning SEND?



Information on what Autism is, and offers: support, advice, resources and courses.



Information on what Dyslexia is and offers information to support cooccurring difficulties at home and at school.



Information to support speech language and communication needs



Information to support dyspraxia.

[NHS information on dyspraxia and developmental coordination disorder can also be accessed here](#)



Information and support where there may be concerns about mental health.



CHIPS
Playschemes

Offer activities for children with SEND both term time and during school holidays.



Information to support children and their families with Autism, ADHD or related condition. SPACE meet regularly to support making connections and building relationships with others.



Offers support and advice directly to families living in the Hoddesdon or Broxbourne area. The service includes parenting courses, family support advice, Autism advice, as well as term time and school holiday activities for children.

Glossary of Terms:

ARE – Age Related Expectation

CAMHS – Childhood and Adolescent Mental Health Services

EHCP – Education and Health Care Plan

EHM – Early Help Module

LHNF – Local High Needs Funding

EP – Educational Psychologist

HABS – Hoddesdon and Broxbourne Settings

HfL – Herts for Learning

ICT – Information Communication Technology

LSA – Learning Support Assistant

OT – Occupational Therapist

PALMS – Positive behaviour, Autism, Learning disability and Mental health Services.

PT – Physiotherapist

SALT – Speech and language therapist

SENCo – Special Educational Needs Coordinator

SEND- Special Educational Needs and/ or Disability.

SENDIASS – Special Educational Needs and Disability Information and Advice Support Service

SLT – Senior Leadership Team

TAF- Team Around the Family

VI – Visual Impairment